



Aluminium & Nano-Plastic SMD LED DOWNLIGHT PRODUCT SPECIFICATION

Product Name: Aluminium & Nano-Plastic SMD LED DOWNLIGHT

Model NO.: PALLAS RAV9SDO31 9W 3000K-4000K-6000K

The products have SAA,C-tick,CE,RoHS,CB,CUL,UL certificates,and strictly follow EU electrical safety standards.

With SMT production lines,six power driver production lines and lamp production assemble lines,24 hours aging testing workshop,more than 30 professional LED engineers and technicians,We can supply more than one million energy-saving LED products to all over the world each year.



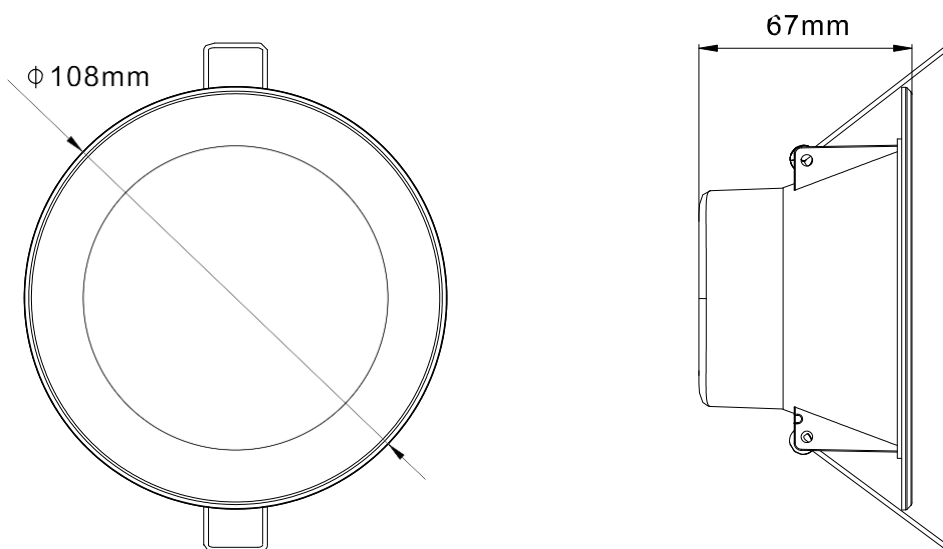
- Nano plastics,high temperature resistant,Good flame retardant,insulation material, Environmental protection,economy lights.
- Nano plastics come with aluminum inside.Better Heat dissipation.
- Aluminum reflector - improve the heat dissipation,light facula evenly.
- Big terminal,easy connect;high quality TUV,SAA ,Approved.

2.Application:

Applications:Aluminum and nanoplastic series SMD LED DOWNLIGHT is widely applied to which traditional fluorescent lamps would normally be used.It appears in anyplace that needs light,such as factories,banks,hotels,stores,commercial buildings,shopping malls, supermarket,underground garage&etc.

3.Physical Dimensions:

Model: PALLAS RAV9SDO31 9W 3000K-4000K-6000K

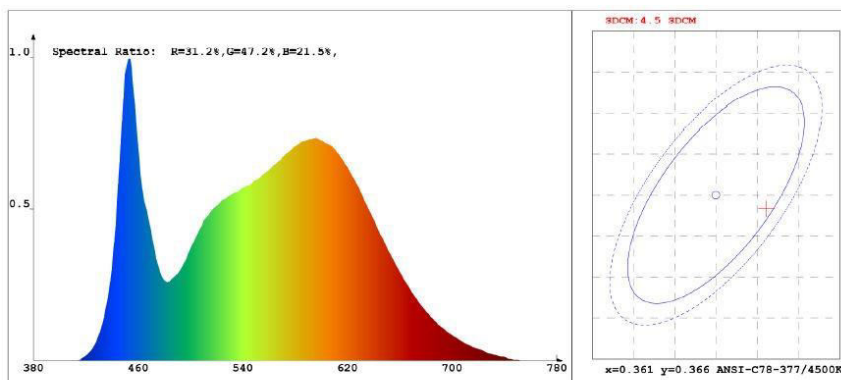


4.Typical Technical Parameters:

Model	Voltage	Lumens	Power	Cut out	Beam Angle	Size	Dimmable
RAV9SDO31(D)	AC220-240V	800-900lm	9W	∅ 90mm	100°	∅ 108*67 mm	Yes

5. Color Parameters:

5.1 Warm White: 9W(3.5inch)



Chroma Parameters

Chro.Coor.: x=0.3672 y=0.3641 u=0.2214 v=0.3293 duv=-0.0019
 CCT: 4296K Dominant Wave.: 579.2nm Purity: 19.5%
 Flux RGB Ratio: R=18.0%, G=79.1%, B=2.9% Peak Wave: 453.8nm Half Width: 22.8nm

Rendering Index: Ra= 85.5

R1 =85 R2 =92 R3 =95 R4 =84 R5 =85 R6 =88 R7 =87 R8 =68
 R9 =19 R10=81 R11=83 R12=62 R13=87 R14=98 R15=80

Photo Parameters

Flux: 905.90lm Effi.: 101.8lm/W Radiant: 2795.3mW Iv: 0.0mcd
 Efficiency: 0.126 Effi Level: A+ (EU 874-2012)

Ele. Parameters

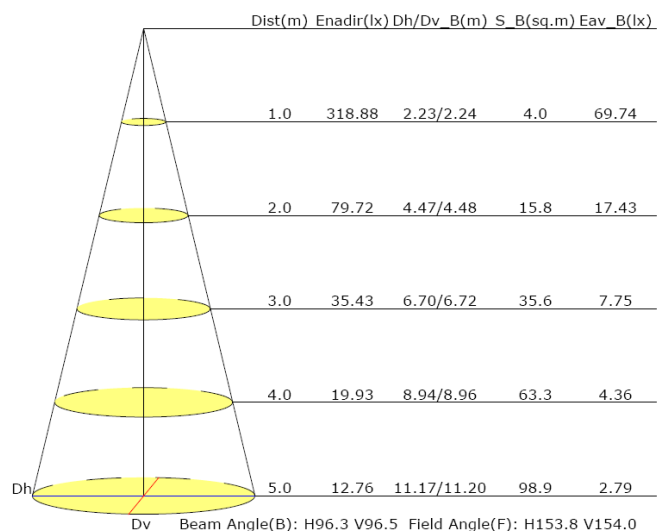
Voltage: U=240.300V Current: I=0.0380A
 Power: P=8.90W Power Factor: PF=0.962

Instrument state

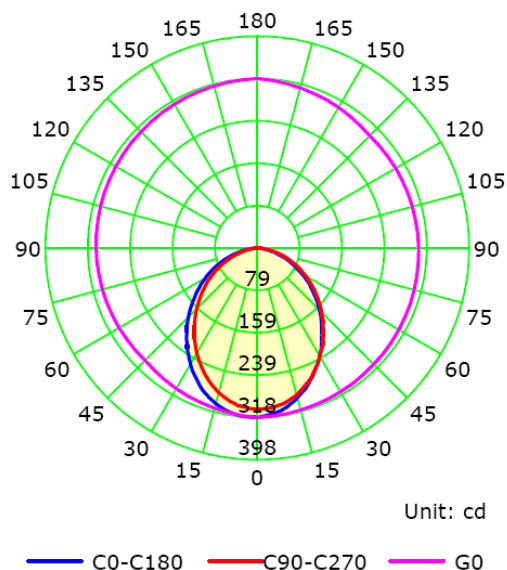
Instrument: Hopoo HP8000 Integral Time: 94.630ms VPeak: 13967
 VDark: 1233 Scan Range: 380-780nm Product ID: 201608142

6. Illuminance:

9W



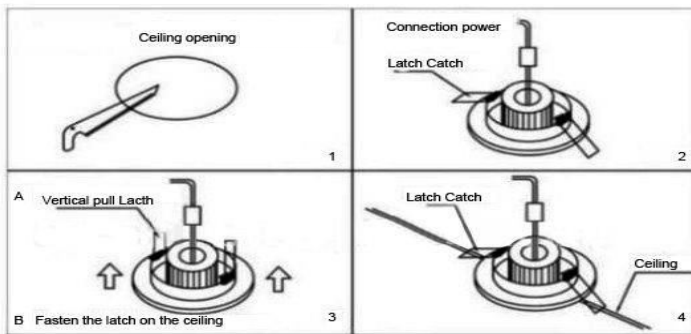
Luminous Intensity Distribution Curve



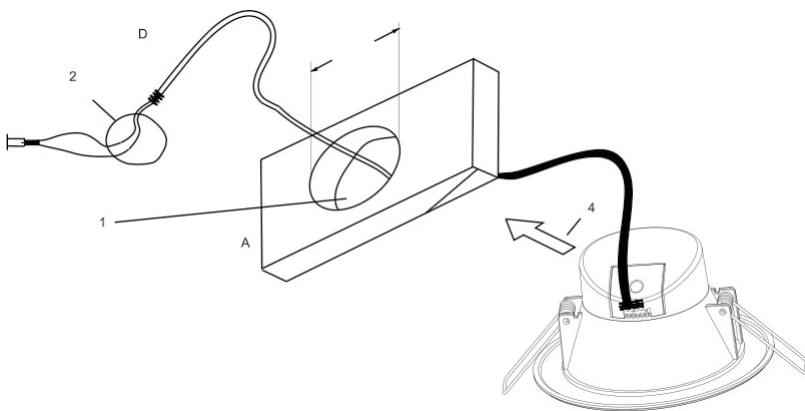
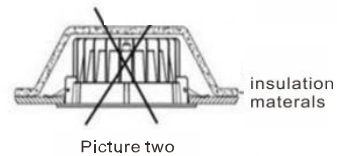
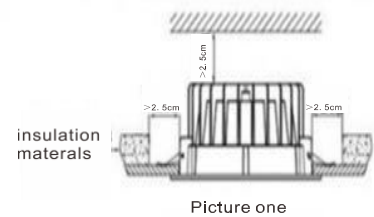
7.Connection Road :

Attention : Before Installation please make sure the power is turn off .

8.Installation :



As shown in above figure,the luminaire mounted in the mounting hole,and ensure strong



A: Wall
B. Spring
C.LED Downlight
D. Driver

Step 1: Make a hole
Step 2: Connect the powerwire
Step 3: Push Spring
Step 4: Put the downlight into the hole

1.Please turn off the power when installing.

2.Do not touch or grasp the downlight when it is hot.

3.Working environmenttem perature:-20~45°C

4.Only for indoor application.

MUST BE INSTALLED BY LICENSED ELECTRICIAN