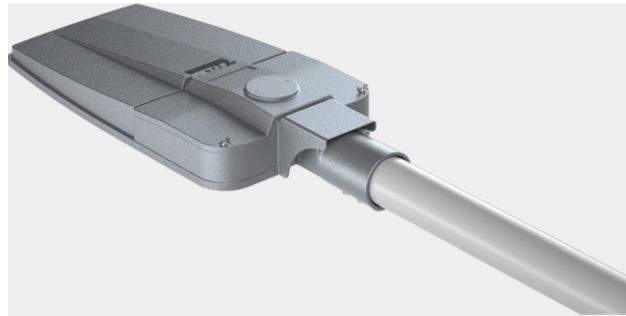


# LED ULIČNA LAMPA

## Halston ML-1009

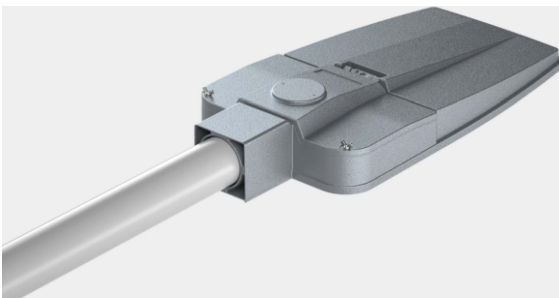


### ELEKTRIČNE KARAKTERISTIKE

1. Ulazni napon: 85-305V 50/60Hz
2. LED struja: 350mA, 525mA, 700mA
3. Faktor snage: >0,9 (at full load)
4. Spajanje: Eksterni konektori za kablove max. 4mm<sup>2</sup>
5. Prenaponska zaštita: SPD integrated 1 0kV-1 0kA, type I
6. Kontrolni sistem: F: Fiksna snaga, nije dimabilna. (Osnovna verzija)
7. DA: Automatizovano dimovanje (virtualna ponoć) sa standardnom verzijom.
8. DAC: Prilagođeni DA profie.
9. FLC: Konstantni svjetlosni flux.
10. PLM: Power Line single point sistem komunikacije.
11. WL: Wireless single point sistem komunikacije.
12. DALI: Digital dimming interface DALI.
13. NEMA: Socket 7 pin (ANSI C136.41).
14. Životni vijek: ≥100.000hr L90B10 (T<sub>q</sub>=25°C, 700mA)  
≥100.000hr L90, TM-21



Podesivi priključak za montažu



### MATERIJAL

Tijelo: Pod pritiskom liveni aluminijum UNI EN1706 bojen prahom.

Optika: 99.85% aluminijum sa nagradnom obradom u 99.95% sa vakumskim taloženjem. Klasa kvaliteta aluminijuma A+ (DIN EN 16268)

Zaslon: Ravno kaljeno staklo, debljine 5 mm, visoke prozirnosti

Uvodnica: Plastika M20x1 .5 - IP68

Dostupne boje aluminijuma: RAL 9007, RAL 9011 Graphiack black, RAL9005

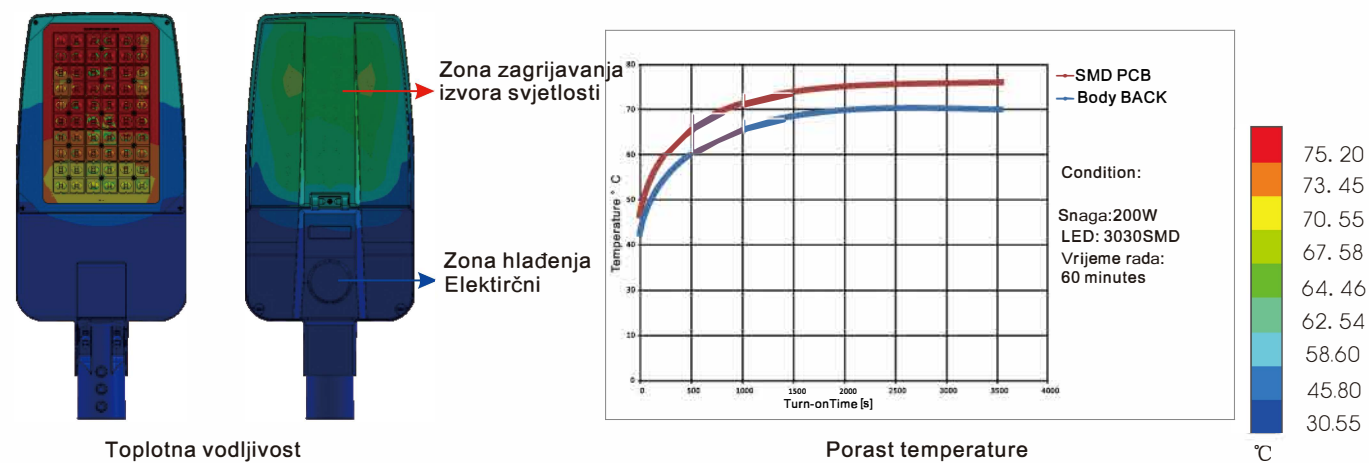
Jet Black, RAL 7016 Anthracite grey, RAL 6005 Green, RAL 7024 Graphite Grey





## SISTEM ODVOĐENJA TOPLOTE

Napredni dizajn FEA tehnologije za toplotni prijenos strukture, kako bi se garantovao dug životni vijek LEDPCB-a i čipova. 5 godina garancije.



Nema/zhaga priključak ili Nodo, foto-želija pametno upravljanje

Okvir od livenog aluminijuma

Silikonska zaštita

Okviri za lijevanje pod pritiskom s premazom u prahu protiv UV zračenja i korozije

Toplotno vodljivi aluminijski PCB

LUMILEDS

SMD 3030/5050 LED

Optičko sočivo

Silikonska zaštita

Zaštitno kaljeno staklo

INVENTRONICS  
DRIVING THE LIGHTING REVOLUTION

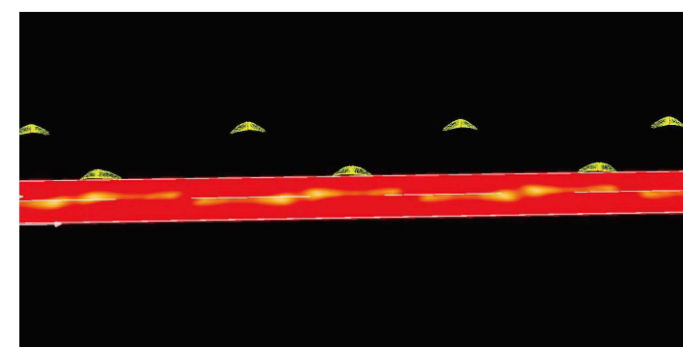
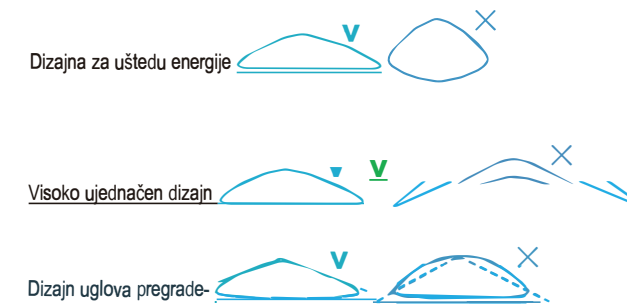
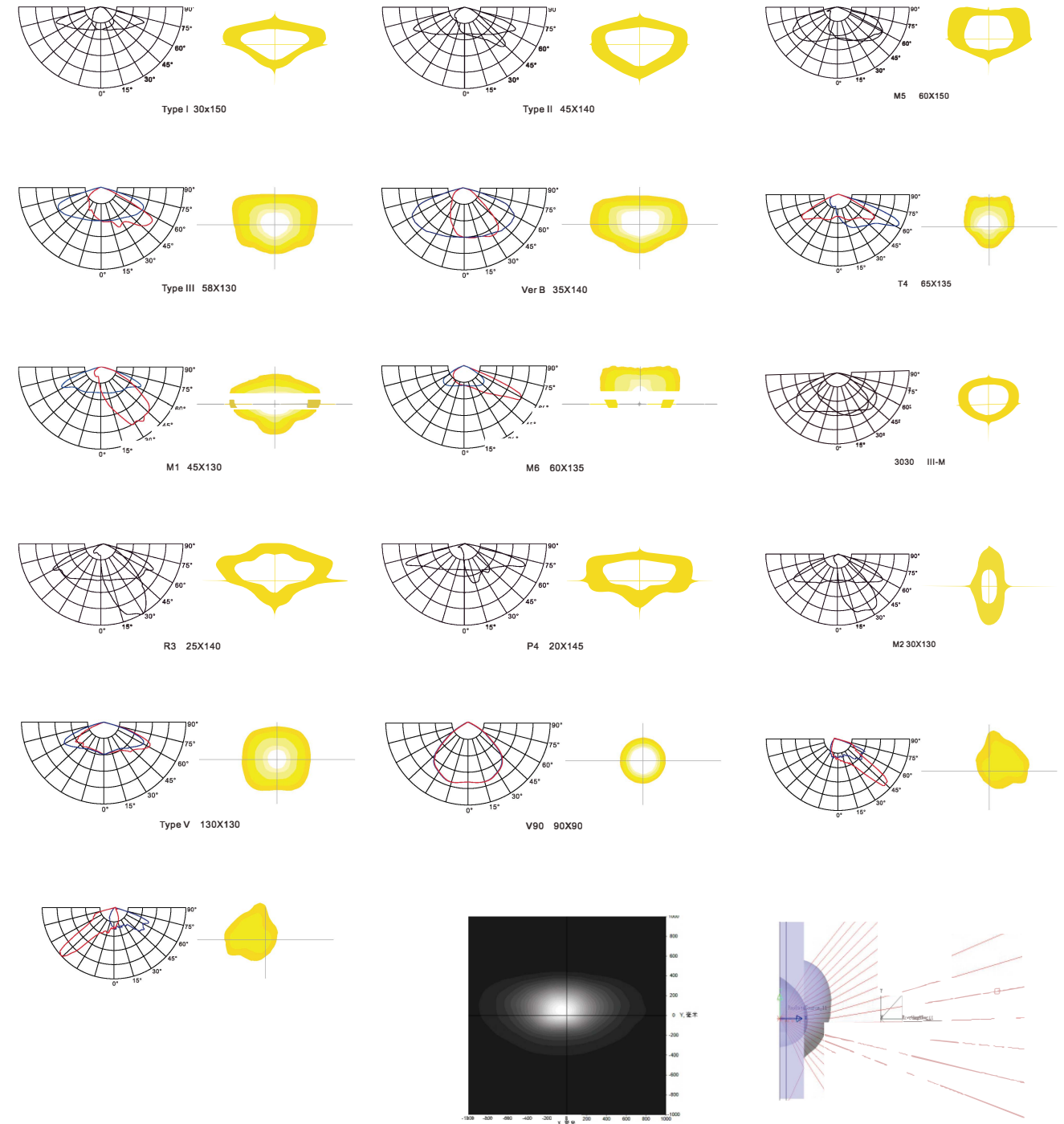
PHILIPS OSRAM  
LED Driver

Priključak sa podesivim uglom

## Lako održavajući dizajn

1. Otvorite bez potrebnih alata.  
Održavanje bez alata.
2. Strukturni vodootporan dizajn.





# LED ULIČNE SVJETILJKE

## Halston ML-1009

**MASS-light**<sup>®</sup>  
Light with style



### SUGESTIJA INSTALACIONE VISINE

16m  
14m  
12m  
10m  
8m  
6m  
4m  
2m



300W  
240W  
200W  
150W  
120W  
100W  
90W  
80W  
60W  
50W  
40W  
30W  
20W

### CHARACTERS

Snaga	40W	60W	100W	150W	200W	240W	320W
IP Zaštita	IP66.IK10.CLASS V/II						
Otpornost na koroziju	C4						
svjetla	Svjetlosni						
Fluks	2700K-6500K	2700K-6500K	2700K-6500K	2700K-6500K	2700K-6500K	2700K-6500K	2700K-5700K
CRI	135-150 LM/W	135-150 LM/W	135-150 LM/W	135-150 LM/W	135-150 LM/W	135-150 LM/W	135-150 LM/W
Ulazni napon	70/80	70/80	70/80	70/80	70/80	70/80	70/80
Driver opcije	85-305V	85-305V	85-305V	85-305V	85-305V	85-305V	85-305V
Dimabilna	PHILIPS XI LP, PHILIPS XI FP, INVENTRONICS EBS, INVENTRONICS EUM, OSRAM Programming range 15-100%, DALI (4-conductor cable), Phase (Line switch) Voltage , (AmpDim) 1-10V/Alternatively: DALI via Zhaga book 18 socket (NEMA 7P), Smart Control system						
Prenaponska zaštita	L/N-GND: 10 kV, (SR driver: 8 kV) L-N: 6KV						
Tipa lampe	SMD LED						
LED čipovi 3030 količina	64	96	160	240	320	384	512
Ulazna struja PCB (3030)	48V 800mA	72V 820mA	96V 1000mA	144V 940mA	180V 1080mA	180V 1350mA	180V 1750mA
LED čipovi 5050 količina	24	32	48	64	80	96	128
Ulazna struja PCB (5050)	72V 540mA	72V 820mA	144V 680mA	144V 1000mA	192V 1000mA	192V 1250mA	192V 1650mA

instalacija Na stub promjera 60 mm, adapter za montažu na stub promjera 76 mm može se dodati

Materijal Livenje pod pritiskom sa standardnim aluminijumom tipa adc12. Kaljeno staklo. Nerđajuće 314 zakačke. Vijičani prozirni polikarbonat sa akrilom otpornim na UV zračenje. opcija za ekran za asimetrično svetlo.

Opcija boje tijela Aluminijum grey: RAL 9007, RAL 9011 Graphiack black, RAL 9005 Jet Black, RAL 7016 Anthracite grey, RAL 6005 Green, RAL 7024 Graphite Grey

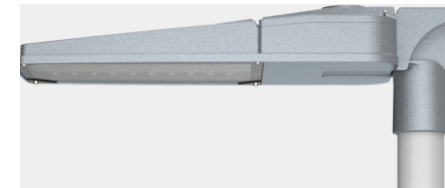
### DIMENZIJE SVJETILJKI SHODNO SNAZI

**MASS-light**<sup>®</sup>  
Light with style

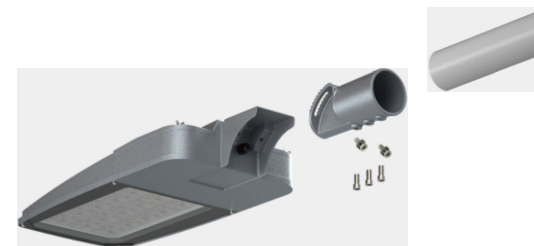
#### ML-1099/A

Fiksiranje se može montirati horizontalno ili vertikalno, adapter 0-15° podesiv

#### Vertikalna instalacija

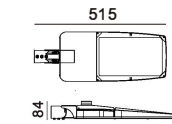


#### Horizontalna instalacija

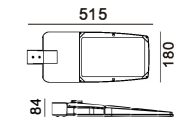


Unit : mm

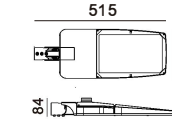
ML1009-20W



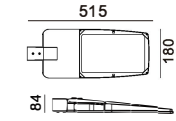
ML1009-30W



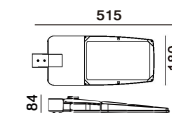
ML1009-40W



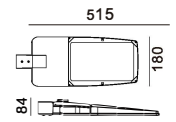
ML1009-50W



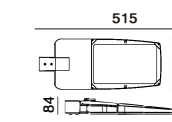
ML1009-60W



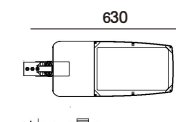
ML1009-75W



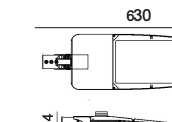
ML1009-80W



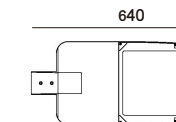
ML1009-90W



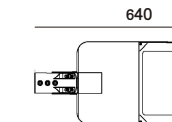
ML1009-100W



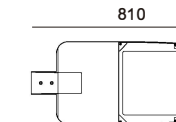
ML1009-120W



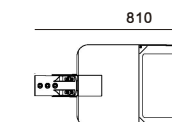
ML1009-150W



ML1009-200W



ML1009-240W



ML1009-300W

